

# COMPRESSION LIMITER SPECIFICATIONS

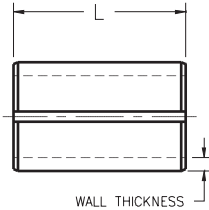
## STANDARD SPLIT SEAM

### SERIES CL200

Not heat treated

### SERIES CL250

Heat treated



### MATERIAL

**B** Carbon Steel SAE 1070-1080  
DIN 177222 WkNr 1.1248 CK75 and  
WkNr 1.1231 CK67

### HARDNESS

**CL200** HV 120 to 245  
**CL250** HV 420 to 545

### FINISH

**K** Plain, Oiled  
**T** Zinc Plated  
**R** Phosphate Coated

### DIMENSIONAL DATA

Unified							
Nominal Bolt Size	Installed I.D. Min.	Wall Thickness	OD	Recommended Hole Size	L*	Rated Proof Load (Lb.)	
						CL200	CL250
#8	ø.193	.033	ø.265/.269	ø.259/.263	.312 to 2, +.000/-0.006	810	1,770
#10	ø.221	.039	ø.305/.311	ø.299/.303	.312 to 2, +.000/-0.006	1,100	2,400
1/4	ø.281	.044	ø.374/.381	ø.368/.372	.312 to 2, +.000/-0.006	2,000	4,350
5/16	ø.344	.059	ø.468/.480	ø.462/.466	.312 to 2, +.000/-0.008	3,200	6,950
3/8	ø.406	.073	ø.558/.574	ø.552/.556	.375 to 2, +.000/-0.010	4,800	10,500

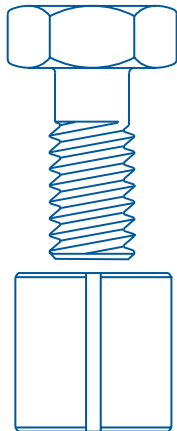
Metric							
Nominal Bolt Size	Installed I.D. Min.	Wall Thickness	OD	Recommended Hole Size	L*	Rated Proof Load (kN)	
						CL200	CL250
M4	ø4.8	0.85	ø6.65/6.75	ø6.50/6.60	8 to 50, +0.0/-0.15	3.69	9.66
M5	ø5.8	1.00	ø7.95/8.10	ø7.80/7.90	8 to 50, +0.0/-0.15	5.96	15.6
M6	ø6.8	1.10	ø9.15/9.33	ø9.00/9.10	8 to 50, +0.0/-0.15	8.44	22.1
M8	ø8.8	1.50	ø11.90/12.20	ø11.75/11.85	8 to 50, +0.0/-0.20	15.4	40.3
M10	ø10.8	1.85	ø14.65/15.07	ø14.50/14.60	10 to 50, +0.0/-0.25	24.4	63.8
M12	ø12.8	2.25	ø17.45/18.00	ø17.30/17.40	14 to 50, +0.0/-0.25	35.4	92.7

\* Longer and shorter lengths on request.

Compression at Proof Load:

**CL200**  $c = Lc \times .0018$

**CL250**  $c = Lc \times .0047$



**Spirol® Standard Split Seam Compression Limiters** can be installed with Spirol pin inserters, pin driving chucks, or simply pressed in.

**To Order:** BUSH, Nominal Bolt Diameter, Length, Material, Finish, Series  
**Example:** BUSH 6 X 14 BK CL250