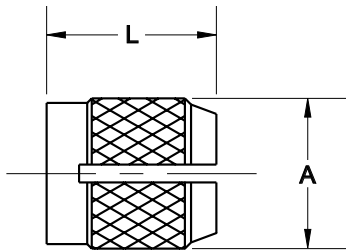
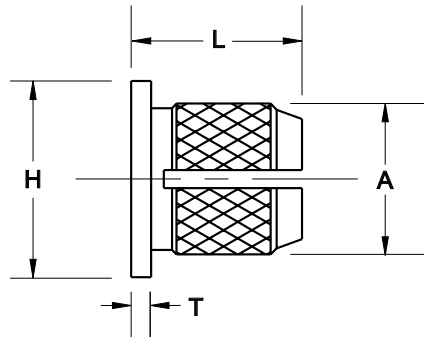


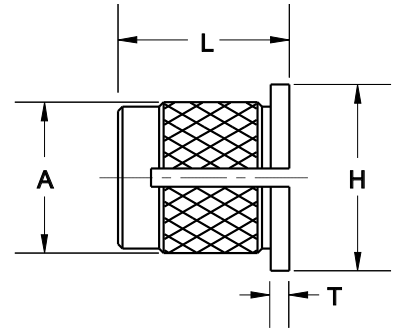
**Serie 15**  
**Estándar**



**Serie 16**  
**Con cabeza**



**Serie 18**  
**Expansión inversa**



### INFORMACION DIMENSIONAL

Tamaño de rosca		A	L	T	H	Diámetro recomendado del barreno +.003
Unificada	Métrica					
4-40	M3	.166	.188	.022	.218	.156
6-32	M3.5	.199	.250	.028	.250	.188
8-32	M4	.230	.313	.035	.281	.219
10-24 10-32	M5	.262	.375	.043	.312	.250
1/4-20	M6	.326	.500	.050	.375	.313
5/16-18	M8	.389	.563	.050	.437	.375