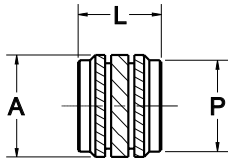
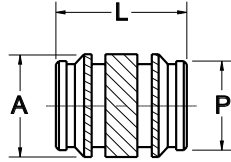


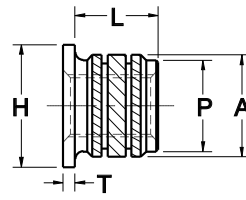
#### Serie 27 Corto



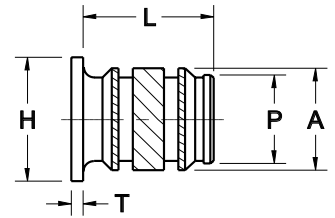
#### Serie 27 Largo



#### Serie 28 Corto



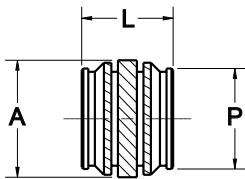
#### Serie 28 Largo



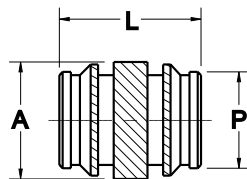
### INFORMACION DIMENSIONAL

Tamaño de rosca		A	A	P	L	L	T	H	Diámetro recomendado del barreno +.003
Unificada	Métrica	27 / 28	29 / 30		Corto	Largo			
2-56	M2	.140	.143	.123	.125	.157	.018	.185	.126
4-40	M2.5 M3	.177	.187	.154	.140	.226	.021	.216	.157
6-32	M3.5	.208	.218	.185	.150	.281	.027	.247	.188
8-32	M4	.241	.251	.218	.185	.321	.033	.278	.221
10-24 10-32	M5	.272	.282	.249	.250	.375	.040	.310	.252
1/4-20	M6	.335	.345	.312	.312	.500	.050	.372	.315
5/16-18	M8	.397	.407	.374	—	.500	.050	.435	.377

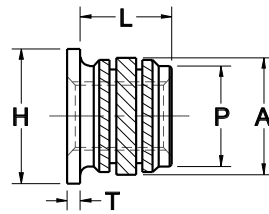
#### Serie 29 Corto



#### Serie 29 Largo



#### Serie 30 Corto



#### Serie 30 Largo

