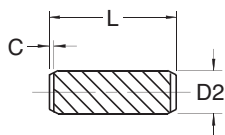


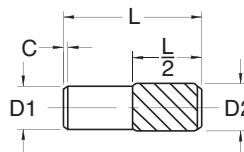
SPIROL® PRE-DESIGNED SPECIALS

Spirol® Helical Grooved Pins in full-length groove and half-length offset groove configurations are pre-designed pins made to special order. Diameters and lengths that extend beyond the specifications supplied below are available on request. These specials are alternatives to our half-length centered standards shown on page 4.

Full Length Series GP200



Half Length Offset Series GP220



Nominal Diameter	INCH SPECIFICATIONS							METRIC SPECIFICATIONS								
		1/16	3/32	1/8	5/32	3/16	1/4		1.5	2	2.5	3	4	5	6	
Diameter "D1"	Min.	.0595	.0908	.1220	.1533	.1845	.2470	Min.	1.43	1.93	2.43	2.93	3.93	4.93	5.93	
	Max.	.0615	.0928	.1240	.1553	.1865	.2490	Max.	1.48	1.98	2.48	2.98	3.98	4.98	5.98	
Diameter "D2"	Min.	.0645	.0958	.1270	.1583	.1895	.2520	Min.	1.55	2.05	2.55	3.05	4.05	5.05	6.05	
	Max.	.0665	.0978	.1290	.1603	.1915	.2540	Max.	1.60	2.10	2.60	3.10	4.10	5.10	6.10	
Chamfer "C"	Min.	.005	.005	.005	.005	.016	.016	Min.	0.15	0.15	0.15	0.15	0.4	0.4	0.4	
Recommended Hole	Min.	.0625	.0938	.1250	.1563	.1875	.2500	Min.	1.50	2.00	2.50	3.00	4.00	5.00	6.00	
	Max.	.0635	.0948	.1260	.1573	.1885	.2510	Max.	1.53	2.03	2.53	3.03	4.03	5.03	6.03	
Minimum Double Shear 6150 High Strength Alloy Steel	Lbs.	600	1450	2650	4200	6100	10900	kN	2.6	4.7	7.4	10.7	19.2	30.2	43.7	
Nominal Diameter		1/16	3/32	1/8	5/32	3/16	1/4		1.5	2	2.5	3	4	5	6	
		.0625	.0938	.1250	.1563	.1875	.2500									
Length "L"		.250 to .625	.250 to 1.000	.250 to 1.250	.313 to 1.500	.313 to 1.750	.438 to 2.250		6 to 16	6 to 20	6 to 26	6 to 30	8 to 40	10 to 50	10 to 55	
		Length Tolerance ± .010								Length Tolerance ± 0.25						

- ⊙ Recommended material: AISI 6150 High Strength Alloy Steel (W).
- ⊙ Dimensions apply before plating.

Part Number Code

TO ORDER: SLDP (Nominal Diameter)x(Length)(Material)(Finish)(Pin Series Number)
 EXAMPLE: SLDP .125 x .250 WK GP200



Innovative fastening solutions.
Lower assembly costs.



Challenge Us!

SPIROL Application Engineers will review your application needs and work with your design team to recommend the best solution. One way to start the process is to visit our **Optimal Application Engineering** portal at www.SPIROL.com.

U.S.A. Spirol International Corporation
30 Rock Avenue
Danielson, Connecticut 06239
Tel. +1 (1) 860.774.8571
Fax. +1 (1) 860.774.2048

Spirol West Inc.
1950 Compton Avenue, Unit 111
Corona, California 92881-6471
Tel. +1 (1) 951.273.5900
Fax. +1 (1) 951.273.5907

Spirol International Corporation Shim Division
321 Remington Road
Stow, Ohio 44224
Tel. +1 (1) 330.920.3655
Fax. +1 (1) 330.920.3659

Spirol Distribution
(For Distributor Customers)
30 Rock Avenue
Danielson, Connecticut 06239
Tel. +1 (1) 860.774.8571
Fax. +1 (1) 860.774.0487

Canada Spirol Industries, Ltd.
3103 St. Etienne Boulevard
Windsor, Ontario
Canada N8W 5B1
Tel. +1 (1) 519.974.3334
Fax. +1 (1) 519.974.6550

Mexico Spirol México, S.A. de C.V.
Carretera a Laredo KM 16.5 Interior E
Col. Moisés Saenz
Apodaca, N.L. 66613 México
ó Apdo. Postal 151 de Apodaca, N.L.
Tel. +52 (01) 81 8385 4390
Fax. +52 (01) 81 8385 4391

Europe Spirol Industries, Ltd.
Princewood Road
Corby, Northants
England NN17 4ET
Tel. +44 (0) 1536 444800
Fax. +44 (0) 1536 203415
(UK Distributors: Tel. 0800 3890034)

Spirol SAS
Rue Henri Rol Tanguy
Z.A. Les Naux
51450 Bétheny - Reims
France
Tel. +33 (0) 3 26 36 31 42
Fax. +33 (0) 3 26 09 19 76

Spirol GmbH
Briener Strasse 9
80333 Munich
Germany
Tel. +49 (0) 931 454 670 74
Fax. +49 (0) 931 454 670 75

Asia Pacific Spirol International Engineered Fastener Trading Co. Ltd.
No. 11 Xi Ya Rd. North
Section A, 1F, Building 14
Wai Gao Qiao Free Trade Zone
Shanghai, China 200131
Tel. +86 (0) 21 5046-1451/1452
Fax. +86 (0) 21 5046-1540

e-mail: info@spirol.com

www.SPIROL.com