

# SPIROL®

## TWIST-LOK™ PINS

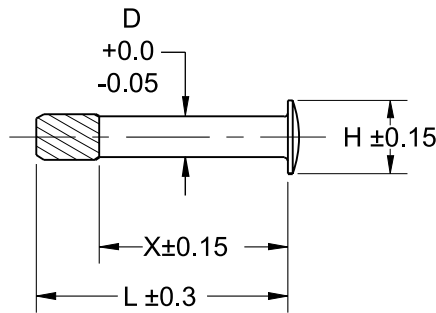
### SPIROL® Series FH600 Pins

Series FH600 Twist-Lok™ Pins replace costly screw machined pins and eliminate problematic installation of screws and rivets.

The helical knurl minimizes stress during installation by rotating as it engages the hinge.

Corrosion-resistant material and a rounded burr-free head improve installed appearance.

Axial and radial forces induced in the hinge eliminate the tendency for the pin to creep and maintain hinge tension.



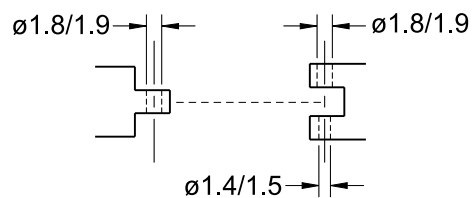
#### DIMENSIONAL DATA — METRIC

Diameter D	Head Diameter H	Length L	Length X
1.60	2.85	6	4.5
		8	6
		10	7.5

#### STANDARD MATERIAL:

Nickel Silver UNS C75200 / CuNi18Zn20 (N)

#### RECOMMENDED HOLE SIZE



Series FH600 Twist-Lok™ Pins are made to order.

C75200 Nickel Silver is a copper alloy that is used for lightly loaded applications where cosmetic finish and corrosion resistance are important. This material is easy to work with, has a bright silver finish and is a cost effective alternative to austenitic stainless steel or plating.

**To Order:** SLDP (Pin Size)x(Length)(Material)(Finish)(Pin Series Number)

**Example:** SLDP 1.60 x 8 NK FH600

Contact **SPIROL** for  
Design Assistance!

[www.SPIROL.com/s/solidpindesign/](http://www.SPIROL.com/s/solidpindesign/)



# Model SG

## Semi-Automatic Dual Pin Inserter

Geared to the Safety Glasses industry, this time tested, proven reliable machine installs a self-locking pin developed by SPIROL into the assembly. The innovative **Twist-Lok™ Pin** replaces commonly used threaded screws as the hinge pins in the temples of the glasses. Screws are generally known to be more expensive, difficult to install, and subject to working their way out of the holes. The pins are simply pressed into the holes, and they create a tight hinge connection that will not work itself loose over time.

The machine is lightweight, portable, low-cost and features simple head center distance adjustment to accommodate different width glasses.

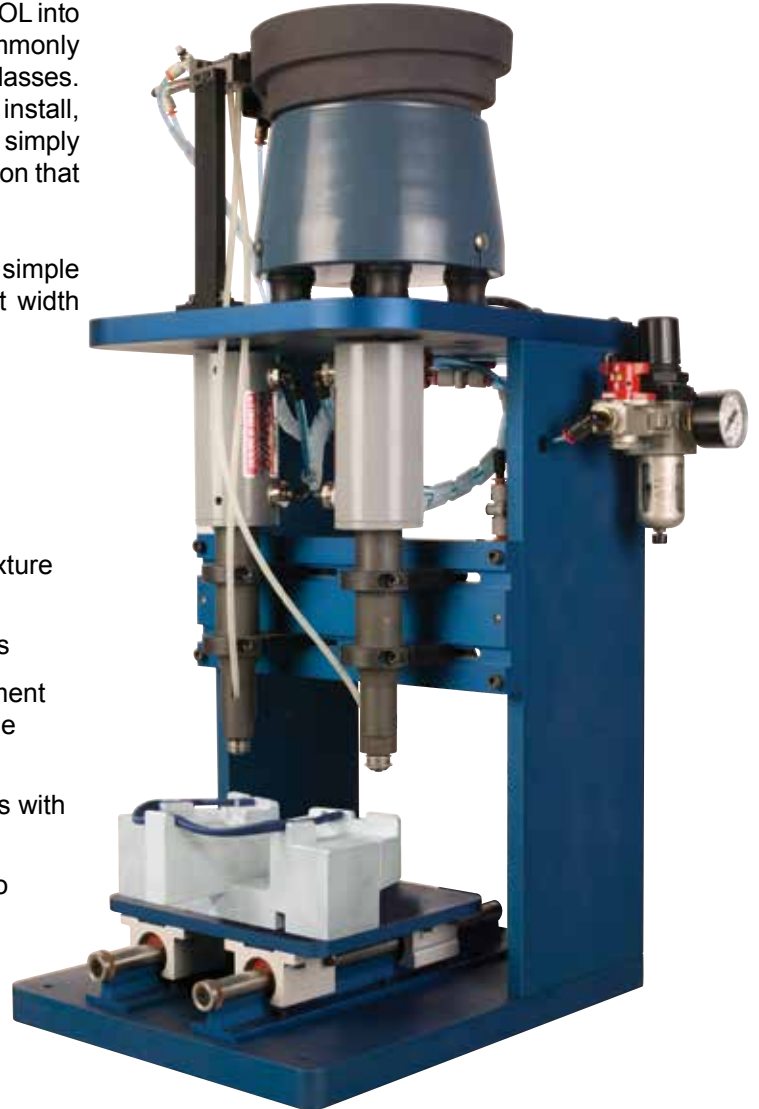
### Design Features/Benefits:

- Accurate:** - Fine insertion depth adjustment
- Reliable:** - Integral pneumatic valve activation with fixture locking device
- Simple:** - Maintenance-free pneumatic logic controls
- Customizable:** - Custom fixture design for accurate placement of parts and precision alignment of multiple component assemblies
- Versatile:** - Feeds multiple lengths of Twist-Lok™ Pins with no adjustment required
- Adaptable:** - Easy adjustment of centerline distances to accommodate different applications

*Optional alignment fixtures available.*

### Simple Operation:

1. Place Safety Glass lens frame and temples into fixture
2. Push fixture forward to activate machine
3. Pin Inserter simultaneously installs two Twist-Lok™ Pins
4. Withdraw fixture and unload the finished assembly



**Application Study: Safety Eyewear**  
**Series FH600 Twist-Lok™ Pins and**  
**Model SG Dual Pin Inserter**

*Read how these products increased the rate of assembly by 400%, eliminated screw walk-out, and improved the safety eyewear's appearance and function.*

<http://www.spirol.com/company/products/applications.php>

**Manual and other automated machines are also available from SPIROL.**



Please refer to [www.SPIROL.com](http://www.SPIROL.com) for current specifications and standard product offerings.

**SPIROL** Application Engineers will review your application needs and work with you to recommend the optimum solution. One way to start the process is to visit our **Optimal Application Engineering** portal at **SPIROL.com**.

## Technical Centers

### Americas

**SPIROL International Corporation**  
30 Rock Avenue  
Danielson, Connecticut 06239 U.S.A.  
Tel. +1 860 774 8571  
Fax. +1 860 774 2048

**SPIROL Shim Division**  
321 Remington Road  
Stow, Ohio 44224 U.S.A.  
Tel. +1 330 920 3655  
Fax. +1 330 920 3659

**SPIROL West**  
1950 Compton Avenue, Suite 112  
Corona, California 92881 U.S.A.  
Tel. +1 951 273 5900  
Fax. +1 951 273 5907

**SPIROL Canada**  
3103 St. Etienne Boulevard  
Windsor, Ontario N8W 5B1 Canada  
Tel. +1 519 974 3334  
Fax. +1 519 974 6550

**SPIROL Mexico**  
Carretera a Laredo KM 16.5 Interior E  
Col. Moisés Saenz  
Apodaca, N.L. 66613 Mexico  
Tel. +52 81 8385 4390  
Fax. +52 81 8385 4391

**SPIROL Brazil**  
Rua Mafalda Barnabé Soliane, 134  
Comercial Vitória Martini, Distrito Industrial  
CEP 13347-610, Indaiatuba, SP, Brazil  
Tel. +55 19 3936 2701  
Fax. +55 19 3936 7121

### Europe

**SPIROL France**  
Cité de l'Automobile ZAC Croix Blandin  
18 Rue Léna Bernstein  
51100 Reims, France  
Tel. +33 3 26 36 31 42  
Fax. +33 3 26 09 19 76

**SPIROL United Kingdom**  
17 Princewood Road  
Corby, Northants  
NN17 4ET United Kingdom  
Tel. +44 1536 444800  
Fax. +44 1536 203415

**SPIROL Germany**  
Prannerstrasse 15  
80333 Munich, Germany  
Tel. +49 89 4 111 905 71  
Fax. +49 89 4 111 905 72

**SPIROL Spain**  
08940 Cornellà de Llobregat  
Barcelona, Spain  
Tel. +34 93 193 05 32  
Fax. +34 93 193 25 43

**SPIROL Czech Republic**  
Sokola Tůmy 743/16  
Ostrava-Mariánské Hory 70900  
Czech Republic  
Tel/Fax. +420 417 537 979

**SPIROL Poland**  
ul. M. Skłodowskiej-Curie 7E / 2  
56-400, Oleśnica, Poland  
Tel. +48 71 399 44 55

### Asia Pacific

**SPIROL Asia Headquarters**  
1st Floor, Building 22, Plot D9, District D  
No. 122 HeDan Road  
Wai Gao Qiao Free Trade Zone  
Shanghai, China 200131  
Tel. +86 21 5046 1451  
Fax. +86 21 5046 1540

**SPIROL Korea**  
160-5 Seokchon-Dong  
Songpa-gu, Seoul, 138-844, Korea  
Tel. +86 (0) 21 5046-1451  
Fax. +86 (0) 21 5046-1540

e-mail: [info@spirol.com](mailto:info@spirol.com)